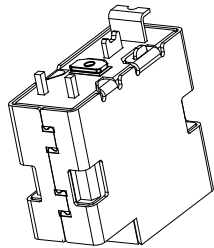
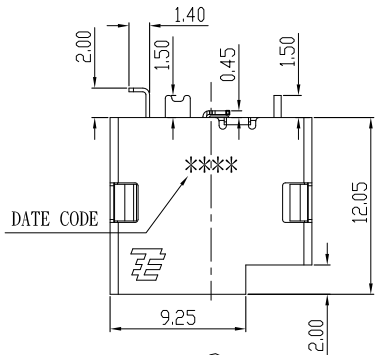


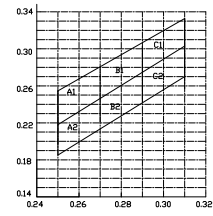
| REV | DESCRIPTION | ECN/ECR | DATE | DRAWN BY |
|-----|-------------|---------|------------|----------|
| △ | 新訂圖面 | — | 06/07/2017 | 唐忠洪 |

Date Code碼說明,例如:1704
第4周
2017年



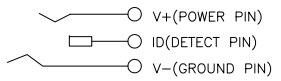
LED'S CHARACTERISTICS:

| NODE | COLOR | DOMINANT WAVELENGTH | FORWARD VOLTAGE | LUMINORS INTENSITY AT 20mA |
|---------|---------|---------------------|-----------------|----------------------------|
| P.B1(+) | P.B2(-) | AMBER | 600~610nm | 2.6V MAX 37.6~192.4 MCD |
| P.B1(-) | P.B2(+) | WHITE | N/A | 3.7V MAX 400~1150MCD |

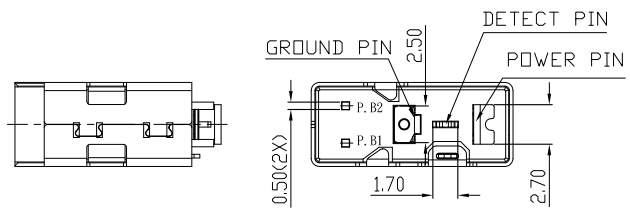
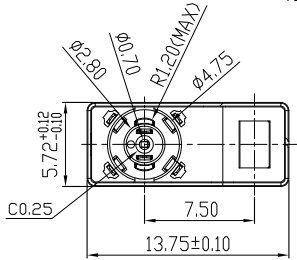


RANG OF BINS(AUQA WHITE)

| Bin | INTENSITY RANGE (mcd) | |
|-----|-----------------------|------|
| | Min | Max |
| L | 400 | 520 |
| M | 520 | 680 |
| N | 680 | 880 |
| P | 880 | 1150 |



CIRCUIT DIAGRAM

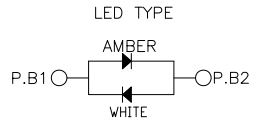
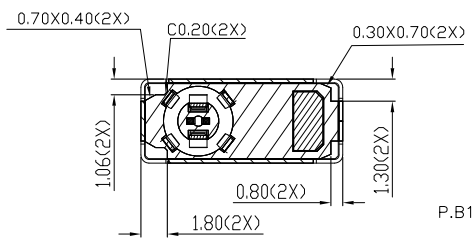
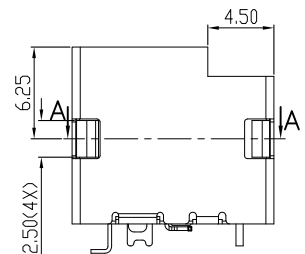


COLOR RANKS.

| | | 0.27 | 0.27 | 0.25 | 0.25 |
|----|---|--------|--------|-------|--------|
| A1 | X | 0.27 | 0.27 | 0.25 | 0.25 |
| | Y | 0.2455 | 0.278 | 0.25 | 0.2175 |
| A2 | X | 0.27 | 0.27 | 0.25 | 0.25 |
| | Y | 0.2455 | 0.213 | 0.185 | 0.2175 |
| B1 | X | 0.27 | 0.27 | 0.29 | 0.29 |
| | Y | 0.2455 | 0.278 | 0.306 | 0.2735 |
| B2 | X | 0.27 | 0.27 | 0.29 | 0.29 |
| | Y | 0.2455 | 0.213 | 0.241 | 0.2735 |
| C1 | X | 0.29 | 0.31 | 0.31 | 0.29 |
| | Y | 0.306 | 0.3355 | 0.303 | 0.2735 |
| C2 | X | 0.29 | 0.31 | 0.31 | 0.29 |
| | Y | 0.241 | 0.2705 | 0.303 | 0.2735 |

ELECTRIACL-OPTICAL CHARACTERISTICS.

| Parameter | Symbol | Value | Unit | Test condition |
|--------------------|--------|-------|----------------|----------------|
| Forward Voltage | Vr | A | 1.7 2.0 2.6 | V If=20mA |
| | | W | 2.8 3.2 3.7 | V If=20mA |
| | | A | 37.6 130 192.4 | mcd If=20mA |
| Luminous intensity | Iv | W | 400 550 1150 | mcd If=20mA |
| | | A | 600 | 610 nm If=20mA |
| | | X | 0.271 | nm If=20mA |
| Reverse Current | Ir | 10 | µA V=5V | |
| Viewing angle | 2θ | 140 | Deg | If=20mA |



NOTES:

- ELECTRICAL CHARACTERISTICS:
 - CONNECTOR RATED CURRENT:7.0A &30°C MAX ΔT OVER AMBIENT
 - RATED VOLTAGE:20V DC
 - INSULATION RESISTANCE 100MOHMS MIN AT 500V DC AFTER 1 MINUTE
 - DIELECTRIC WITHSTAND VOLTAGE: 500V AC FOR 1 MINUTE,
 - CONTACT RESISTANCE:30 mOHMS MAX.
- MECHANICAL CHARACTERISTICS:
 - MATING FORCE:2.5Kgf MAX
 - UNMATING FORCE: INITIAL:0.6-2.0Kgf AFTER LIFE TEST:0.4-2.0Kgf
 - DURABILITY(MATING/UNMATING FORCE CYCLES):5000 CYCLES
- OPERATING TEMPERATURE RANGE:-40°C~85°C
- REMARK:MOISTURE SENSITIVE DEVICE MSL6-AFTER PACKING BEEN OPENED 8 HOURS,PARTS MUST BE BAKED FOR MIN 5DAYS AT 40°C &<5% RH

Build of material:

| NO | DESCRIPTION | QTY | MATERIAL | FINISH(OR COLOR) |
|----|----------------------------|-----|--|--|
| 7 | SLIM HP DC JACK-LED | 1 | HongKai(1L2429A2W30MK505) HuaDing(520111OROH-364-G) | AMBER/WHITE |
| 6 | SLIM HP DC JACK-STOPPER | 1 | LCP E6808/E6006 LCP E130I PA4T TX1 PA46 TE250F6 | BLACK |
| 5 | SLIM HP DC JACK-DETECT PIN | 1 | PHOSPHOR BRONZE(C5210R) T=0.35±0.05mm | 50u"Ni min/Pd/Ni 30u"min with 5u"Au Plating at contact area |
| 4 | SLIM HP DC JACK-POWER PIN | 1 | PHOSPHOR BRONZE(C5210R) T=0.25±0.05mm | |
| 3 | SLIM HP DC JACK-GROUND PIN | 1 | PHOSPHOR BRONZE(C5210R) T=0.25±0.05mm | |
| 2 | SLIM HP DC JACK-HOUSING | 1 | LCP E6808/E6006 LCP E130I PA4T TX1 PA46 TE250F6 | BLACK |
| 1 | SLIM HP DC JACK-SHELL | 1 | SUS 201 T=0.25±0.05mm | 30u"Ni Min |

| | | | | | | | | |
|--|-------------|-----|------|---------------------------------------|-----------------|------------------|-------|-----|
| 東莞世華電子有限公司 SHYH HWA ELECTRONICS CO.,LTD.(DONGGUAN) 地址:東莞市塘廈鎮諸佛嶺178工業區 TEL:0769-7910020-1 FAX:0769-7910210 | DRAWN BY | 唐忠洪 | ITEM | SLIM HP DC JACK焊線式90° (421專用)(优化版) | | ANGLE PROJECTION | UNIT | mm |
| | CHECKED BY | | | PART NO | CD4211062001-XX | TOLERANCE | SCALE | 1:1 |
| | APPROVED BY | | | | | | DATE | |